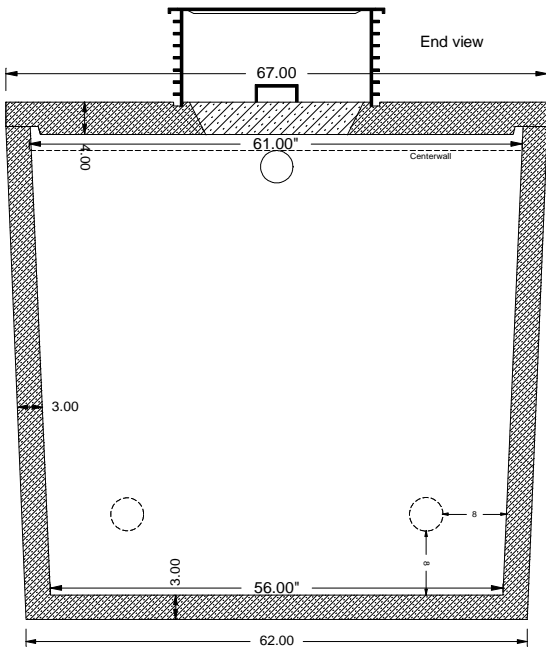
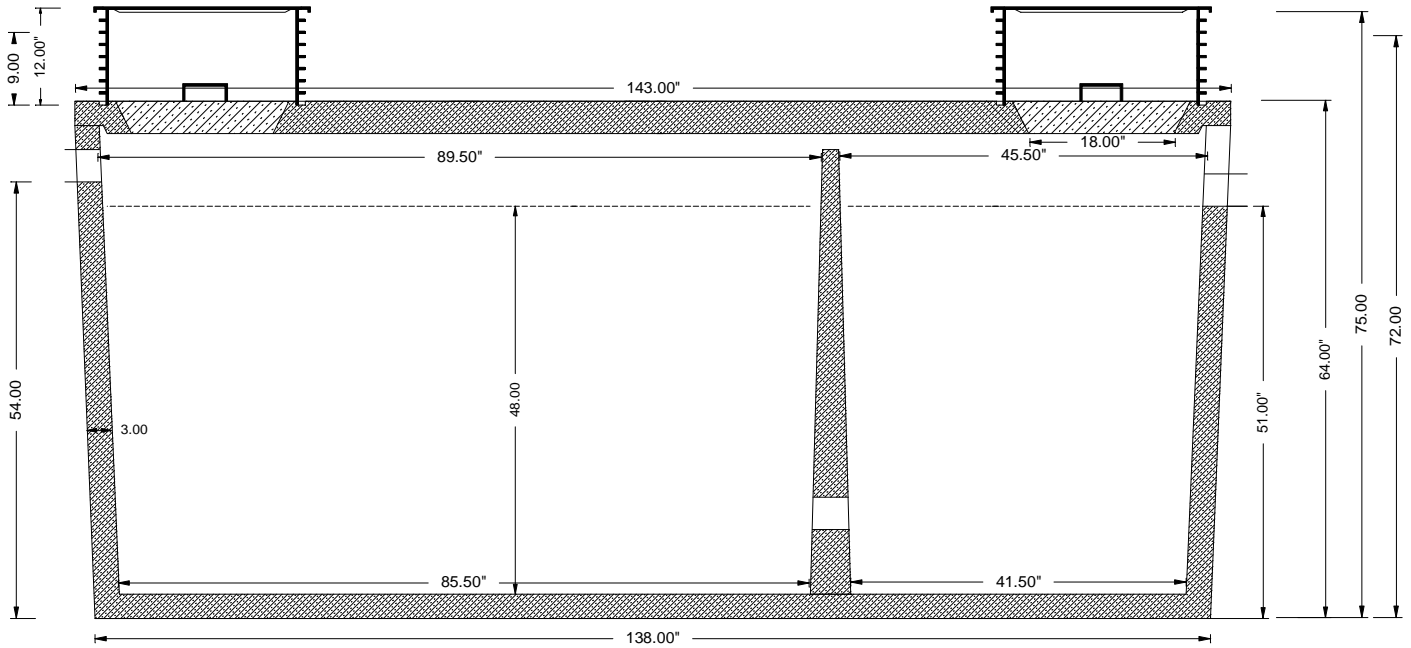


M-1 Tanks Inc.

1500 Gallon Grease Interceptor Tank



Tank joint sealed with CS 101 butyl rubber sealant

Tank is constructed of reinforced concrete with a minimum compressive strength of 5000 psi

Tank is designed to support 3' of burial depth plus a 2500 lb. wheel load

Risers and lids are not designed for wheel traffic however they have been tested with loads that significantly exceed 2500 lbs.

Rubber pipe seals with stainless steel clamps are designed to meet or exceed ASTM C-1644